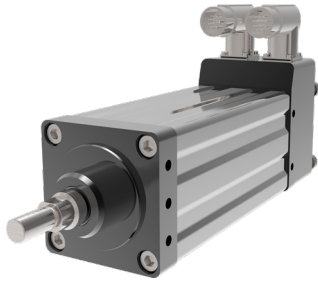


Curtiss-Wright offers a broad range of Exlar® products to fit almost any need. From a simple servo motor to a fully integrated drive / motor / actuator, chances are we have the solution to solve your most difficult manufacturing challenges. Our newest actuators offer even more force and functionality than before.

While this overview provides a brief summary of products available, you may want to request a copy of the catalog for complete descriptions, specifications, and drawings at www.exlar.com.

INTEGRATED MOTOR / ACTUATORS



GTX Series Linear Actuators

Model	Frame Size mm (in)	Stroke mm (in)	Cont. Force N (lbf)	Max Speed mm/sec (in/sec)
GTX060	60 (2.36)	80 (3.15), 150 (6), 300 (12)	AC-2,668 (600) DC-2,668 (600)	AC-1,270 (50) DC-847 (33.3)
GTX080	80 (3.15)	100 (4), 150 (6), 300 (12), 450 (18)	AC - 8,365 (1,881) DC - 7,101 (1,596)	AC - 1,270 (50) DC - 508 (20)
GTX100	100 (3.9)	150 (6), 300 (12)	AC - 15,392 (3,460)	AC - 953 (37.5)

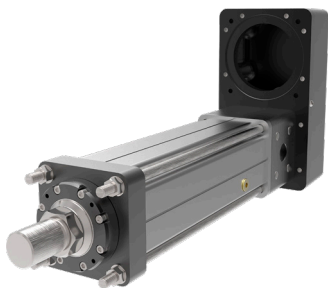
FULLY INTEGRATED DRIVE / MOTOR / ACTUATORS



TTX Series AC or DC Linear Actuators

Model	Frame Size mm (in)	Stroke mm (in)	Cont. Force N (lbf)	Max Speed mm/sec (in/sec)
TTX080	80 (3.15)	100 (4), 150 (6), 300 (12), 450 (18)	AC - 5,900 (1,325) DC - 4,970 (1,115)	AC - 635 (25) DC - 508 (20)

LINEAR ACTUATORS WITH EXTERNALLY MOUNTED MOTOR



FTX Series Linear Actuators

Model	Frame Size mm (in)	Stroke mm (in)	Max Cont. Force kN (lbf)	Max Speed mm/sec (in/sec)
FTX095	95 (3.74)	150 (6), 300 (12), 600 (24), 900 (36)	22.2 (5,000)	1,500 (59.3)
FTX125	125 (5)		44 (10,000)	583 (23)
FTX160	160 (6.3)		89 (20,000)	1,000 (39)
FTX215	215 (8.5)	150 (6), 300 (12), 600 (24)	178 (40,000)	875 (34)



FTP Series Linear Actuators

Model	Frame Size mm (in)	Stroke mm (in)	Max Cont. Force kN (lbf)	Max Speed mm/sec (in/sec)
FTP160	160 (6.3)	150 (6), 300 (12), 600 (24), 900 (36)	200 (45,000) 22.5 tf (pressing)	401 (15.8)
FTP215	215 (8.5)	150 (6), 300 (12), 600 (24)	355 (80,000) 40 tf (pressing)	351 (13.8)