

Exlar® actuators from Curtiss-Wright deliver an unmatched range of capabilities, power, and performance in both linear and rotary configurations. Select from a broad range of products to find the most robust, reliable, and cost-effective solution for nearly any motion application.

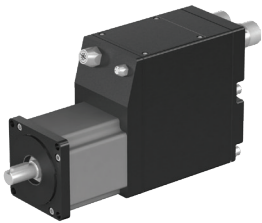
While this overview provides a brief summary of products available, you may want to request a copy of the catalog for complete descriptions, specifications, and drawings at [www.exlar.com](http://www.exlar.com).

## FULLY INTEGRATED DRIVE / MOTOR / ACTUATORS



### Tritex II AC Series Linear Actuators

Model	Frame Size (in/mm)	Stroke (in)	Max Cont. Force lbf (kN)	Peak Force lbf (kN)	Max Speed in/sec (mm/sec)
T2X075	2.95/75	3, 6, 10, 12, 14, 18	990 (4.4)	1980 (8.8)	33.33 (847)
T2X090	3.54/90	3, 6, 10, 12, 18	1488 (6.62)	2700 (12.01)	33.33 (847)
T2X115	4.53/115	4, 6, 10, 12, 18	3224 (14.3)	5400 (24.0)	37.5 (953)



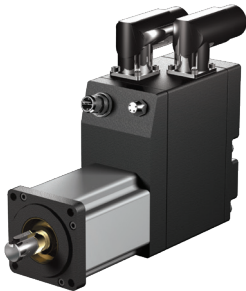
### Tritex II AC Series Rotary Actuators

Model	Frame Size (in/mm)	Gear Ratios X:1	Max Output Torque (geared) lbf-in (Nm)	Output Speed (RPM)
R2M/G075	2.95/75	4, 5, 10	1618 (182.8)	4000/ratio
R2M/G090	3.54/90	4, 5, 10, 16, 20, 25, 40, 50, 100	2078 (234.8)	4000/ratio
R2M/G115	4.53/115	4, 5, 10, 16, 20, 25, 40, 50, 100	4696 (530.4)	3000/ratio



### Tritex II DC Series Linear Actuators

Model	Frame Size (in/mm)	Stroke (in)	Max Cont. Force lbf (kN)	Peak Force lbf (kN)	Max Speed in/sec (mm/sec)
TDX060	2.36/60	3, 6, 10, 12	528 (2.4)	666 (2.96)	33.33 (847)
TDX075	2.95/75	3, 6, 10, 12, 14, 18	872 (3.9)	1190 (5.3)	25 (635)



### Tritex II DC Series Rotary Actuators

Model	Frame Size (in/mm)	Gear Ratios X:1	Max Output Torque (geared) lbf-in (Nm)	Output Speed (RPM)
RDM/G060	2.36/60	4, 5, 10, 16, 20, 25, 40, 50, 100	603 (68.1)	5000/ratio
RDM/G075	2.95/75	4, 5, 10	1618 (182.8)	4000/ratio
RDM/G090	3.54/90	4, 5, 10, 16, 20, 25, 40, 50, 100	2078 (234.8)	3300/ratio

Over for integrated actuators, universal actuators, motors, and gearmotors

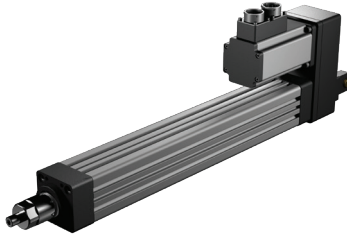
## INTEGRATED MOTOR / ACTUATORS



### GSX Linear Actuators

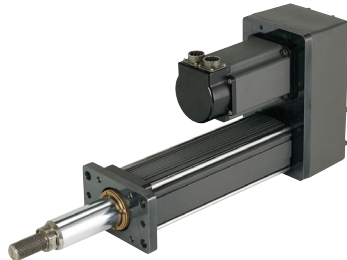
Model	Frame Size (in/mm)	Stroke (in)	Max Cont. Force lbf (kN)	Max Speed in/sec (mm/sec)
GSX20	2/50.8	3, 6, 10, 12	578 (2.6)	33.3 (845.8)
GSX30	3/76.2	3, 6, 10, 12, 14, 18	1,277 (5.7)	25 (635)
GSX40	4/101.6	4, 6, 8, 10, 12, 18	3,457 (15.4)	37.5 (953)
GSX50	5.5/139.7	6, 10, 14	7,150 (31.8)	40 (1016)
GSX60	7/177.8	6, 10	11,528 (51.3)	40 (1016)

## LINEAR ACTUATORS WITH EXTERNALLY MOUNTED MOTOR



### KX Series Linear Actuators

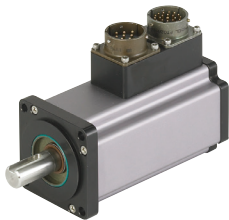
Model	Frame Size (in/mm)	Stroke mm (in)	Max Force lbf (kN)	Max Speed in/sec (mm/sec)
KX60	2.36/60	150 (6), 300 (12), 600 (24), 900 (36)	1,350 (6)	32.8 (833)
KX75	2.95/75		2,500 (11.1)	26.2 (666)
KX90	3.54/90		3,500 (15.6)	19.7 (500)



### FT Series Linear Actuators

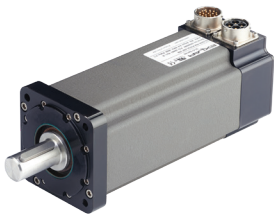
Model	Frame Size (in/mm)	Stroke (in)	Max Force lbf (kN)	Max Speed in/sec (mm/sec)
FT35	3.5/90	6, 12, 18, 24, 36, 48	5,000 (22.2)	59.3 (1506)
FT45	4.7/120	6, 12, 18, 24, 36, 48	10,000 (44.5)	23 (584)
FT60	5.9/150	12, 24, 36, 48	20,000 (89.0)	39 (991)
FT80	7.9/200	12, 24, 36, 48	40,000 (177.9)	34.4 (874)

## ROTARY MOTORS AND GEARMOTORS



### SLM Series Brushless Motor

Model	Frame Size (in/mm)	Max Cont. Torque lbf-in (Nm)	Max Speed (RPM)
SLM060	2.36/60	15.3 (1.73)	5000
SLM075	2.95/75	37.9 (4.29)	4000
SLM090	3.54/90	55.7 (6.3)	4000
SLM115	4.53/115	176.9 (19.98)	3000
SLM142	5.59/142	238.3 (26.93)	2400
SLM180	7.10/180	611.6 (69.1)	2400



### SLG Series Gearmotor

Model	Frame Size (in/mm)	Gear Ratios X:1	Max Output Torque (geared) lbf-in (Nm)
SLG060	2.36/60	4, 5, 10, 16, 20, 25, 40, 50, 100	603 (68.1)
SLG075	2.95/75	4, 5, 10	1618 (182.8)
SLG090	3.54/90	4, 5, 10, 16, 20, 25, 40, 50, 100	2078 (234.8)
SLG115	4.53/115	4, 5, 10, 16, 20, 25, 40, 50, 100	4696 (530.4)

Products certified for hazardous locations are also available, please contact Exlar.

**EXLAR**<sup>®</sup>