

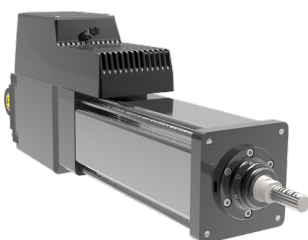
PROCESS PRODUCT OVERVIEW

What makes it an Exlar® actuator? Exlar actuators from Curtiss-Wright have a **PROVEN** history of quality and legendary reliability. The Exlar drive technology offers a compact **POWER**-dense electromechanical actuator solution that can be controlled with **PRECISION** due to its advanced servomotor roller screw design.

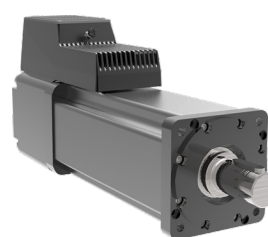
Exlar® electric actuators answer the demand for efficient, high-speed solutions in the process industry. In both rotary and linear configurations, these Ethernet-enabled smart actuators can withstand the most rugged environments. They meet today's strict emissions regulations without compromising speed or performance when switching from pneumatic to electric.



Electric Valve Actuator



Linear Products



Rotary Products

INTELLIGENT PRODUCTS — DRIVE | MOTOR | ACTUATOR

TRITEX® Intelligent Actuator Platforms Perfect for Oil & Gas Applications

EVA — Electric Valve Actuator for upstream applications



Model	Frame Size mm (in)	Stroke Length mm (in)	Seating Thrust kN (lbf)	Max Speed mm/s (in/s)
EVA080	80 (3.15)	101.6 (4)	6.67 (1500)	24.4 mm/s (1 in/s) @ 24 Vdc

RDG — Electric Rotary Actuator for DC high duty cycle, continuous modulating valve applications



Model	Frame Size mm (in)	Gear Ratios X:1	Max Output Torque (geared) Nm (lbf)	Output Speed (RPM)
RDG090	90 (3.54)	4, 5, 10, 16, 20, 25, 40, 50, 100	234.8 (2,078)	3300/ratio

R2G — Electric Rotary Actuator for AC high duty cycle, continuous modulating valve applications



Model	Frame Size mm (in)	Gear Ratios X:1	Max Output Torque (geared) Nm (lbf)	Output Speed (RPM)
R2G115	115 (4.53)	4, 5, 10, 16, 20, 25, 40, 50, 100	530.4 (4,696)	3000/ratio

T2X — Electric Linear Actuator for AC upstream applications



Model	Frame Size mm (in)	Stroke Length mm (in)	Max Peak Force kN (lbf)	Max Continuous Force kN (lbf)	Max Speed mm/s (in/s)
T2X115	115 (4.53)	101.6, 152.4, 254, 304.8 457.2 (4, 6, 10, 12, 18)	24.0 (5,400)	14.3 (3,224)	953 (37.5)



EVA Catalog



EVA Specifications



EVA Animation



Inverted Roller Screw
**Changing the game
for over 30 years!**

Who We Are

Exlar high-performance roller screw electric actuators from Curtiss-Wright offer superior life and reliability exceeding the rugged demands of the process industry. We have engineered highly reliable electric actuation for three decades beginning with the invention of the first electric inverted roller screw servo actuator in 1992.

For over 25 years Exlar has been a leader in electric valve control actuation, beginning with its first explosion proof valve actuator introduced in 1996. In 2013, Exlar introduced the general purpose Tritex® TDM075 actuator with integrated electronics for upstream Oil & Gas applications. It achieved hazardous location

certification, offering the first electric actuation solution that exceeded the performance of existing pneumatic actuators. Now — a decade later — another breakthrough product is introduced, the Tritex® EVA080 electric valve actuator. It is the most rugged Tritex configuration to date.

Go to **www.exlar.com** to download automation resources.



Exlar® is a brand of the Curtiss-Wright Actuation Division.